



**£525,000**

**Lyndhurst Gardens**

Essex, IG11 9XZ



3 bedroom terrace house with 2 reception rooms and large garden.

The property features from a good size front reception and 2nd reception room accessible via kitchen with the option to open up the 2 rooms to create a through lounge.

There is a L-shaped fitted kitchen with space for dining area and access to a good size rear garden.

Upstairs features 3 bedrooms, family bathroom, storage and loft access.

Located in the sought-after Faircross Estate, Lindhurst Gardens offers a peaceful, family-friendly setting with excellent access to local amenities. Just a short walk from Upney and Barking stations, the area provides fast links to central London. Nearby are well-regarded schools, including Eastbury and Loxford (Ofsted Outstanding), as well as Barking Park with its green open spaces and leisure facilities. This quiet, tree-lined street is known for its spacious period homes and strong community feel — ideal for families and commuters alike.

Offered on a chain free basis.

Tenure: Freehold

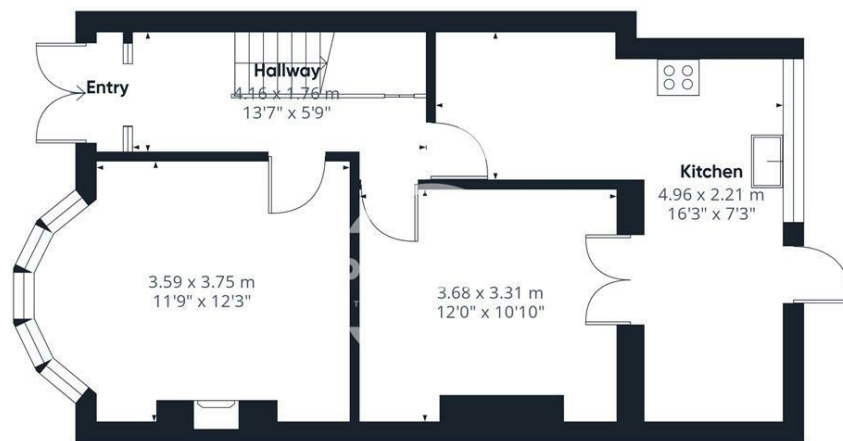
Council Tax: Band D



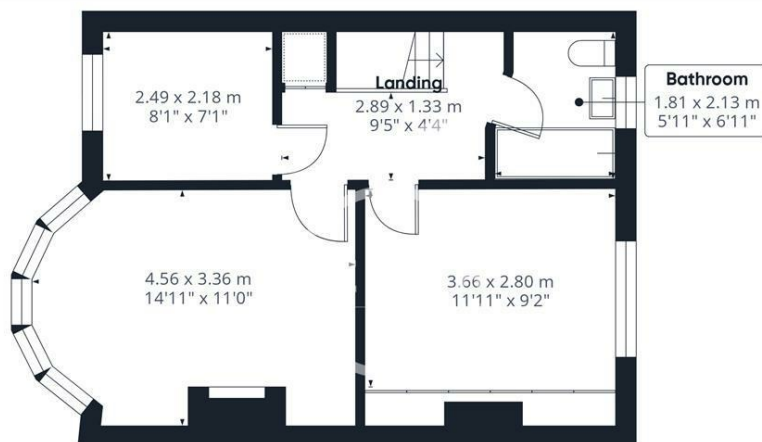








Floor 0



Floor 1

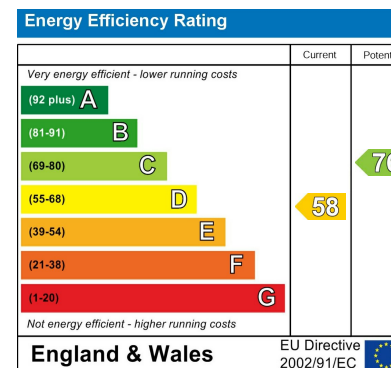
Approximate total area<sup>(1)</sup>

92.5 m<sup>2</sup>  
997 ft<sup>2</sup>

(1) Excluding balconies and terraces

Calculations reference the RICS IPMS 3C standard. Measurements are approximate and not to scale. This floor plan is intended for illustration only.

GIRAFFE360



Agents Note: Whilst every care has been taken to prepare these particulars, they are for guidance purposes only. All measurements are approximate and are for general guidance purposes only and whilst every care has been taken to ensure their accuracy, they should not be relied upon and potential buyers/tenants are advised to recheck the measurements

**OFFICE ADDRESS**  
88 Cheshire Street  
London  
E2 6EH

**OFFICE DETAILS**  
0207 739 6969  
info@peachproperties.com  
www.peachproperties.com